



Succeed Under CalAIM With Real-Time Health Data From Manifest MedEx

Ensure eligible members get the coordinated whole person care they need, when they need it

As the largest nonprofit health data network in California, Manifest MedEx (MX) is an integral part of the state's health data infrastructure, combining and delivering crucial health information to help Medi-Cal managed care plans (MCPs) succeed under CalAIM.

With Manifest MedEx, Medi-Cal MCPs can:



Meet the Memorandum of Understanding (MOU) data sharing requirements of All Plan Letter (APL) 23-029 with Third Party Entities as required to improve care coordination and manage population health.



Start care coordination right away when a member is admitted, discharged, or transferred from a hospital to improve outcomes and reduce unnecessary readmissions.



Accelerate Enhanced Care Management (ECM) and address health-related social needs with longitudinal health records that include data such as:

- Medical histories with medications, lab results, chart notes, and more
- Assessment, care plans, and care team information to better coordinate care
- Demographics, such as race, ethnicity, preferred language, sexual orientation, and gender identity (SOGI) to provide appropriate and tailored care
- Updated contact information, including family members, to help reach those who may be difficult to reach or lost to follow-up
- Information about health-related social needs, including Z-Codes to inform referrals for Community Supports when eligible
- Behavioral health data as permitted under HIPAA, 42 CFR Part 2, California-specific regulations, and other applicable law



Manage population health and improve health equity and quality outcomes with insights gained from population health reporting and data services. This includes:

- Identifying and targeting resources for members most at risk for emergency department (ED) utilization and hospital admissions based on chronic conditions and other risk factors
- Understanding health disparities within a population with social drivers of health (SDOH)-related data and Public Health Alliance of Southern California’s Healthy Place Index
- Closing quality gaps by identifying gaps in care with clinical data extracts that can be easily ingested by HEDIS® engines and used for HEDIS® measures



Ensure eligible members receive their ECM benefits by populating enrollment data in MX Access, our web-based portal for longitudinal patient records, so that the 2600+ providers in the MX network can easily coordinate with a member’s ECM provider, should the member be seen in their clinics, urgent care centers, or other facilities.

ECM Eligibility Information Displayed in MX Access

BURKE, TERRY 10/06/1997 (26 Yrs) F More demographics

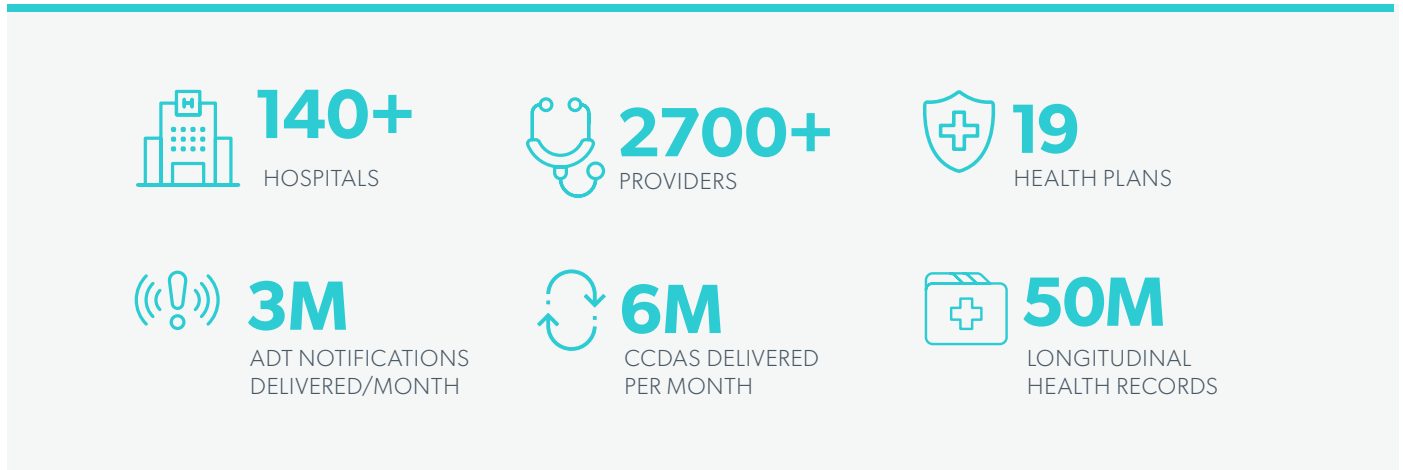
| Insurance Name | Type | Group Name | Policy Number | Plan | Start Date | End Date | Relationship |
|--|-----------------------------|----------------------|---------------|---------------------------------|----------------|------------|--------------|
| Active Eligibility | | | | | | | |
| Health Net | | | R00123321 | | | | |
| Inland Empire Health Plan | Med, Rx | CAL CHOICE JUNE 1.00 | 47665487 | Exclusive Provider Organization | 05/31/2018 | | Child |
| Patient's current insurance(s) coverage(s) | | | | | | | |
| Inactive Eligibility | | | | | | | |
| Inland Empire Health Plan | Med, Rx | CAL CHOICE JUNE 1.00 | 47665487 | Exclusive Provider Organization | 06/01/2017 | 05/30/2018 | Child |
| Patient's previous insurance(s) coverage(s) | | | | | | | |
| Active Enhanced Care Management (ECM) | | | | | | | |
| ECM Eligible | ECM Provider Name | ECM Provider NPI | Start Date | End Date | Insurance Name | | |
| Yes | Riverside Family Physicians | 1234567890 | 01/01/2024 | 12/31/2024 | Health Net | | |
| Historical Enhanced Care Management (ECM) | | | | | | | |
| Previously ECM Eligible | ECM Provider Name | ECM Provider NPI | Start Date | End Date | Insurance Name | | |
| Yes | Health Medical Foundation | 9876543210 | 01/01/2021 | 12/31/2021 | Health Net | | |

By enabling timely and more comprehensive health and social information exchange, Manifest MedEx helps MCPs support and succeed under CalAIM.

About the Manifest MedEx Network

Manifest MedEx seamlessly connects and exchanges data with more than 70 different EHRs across California – from the largest vendors used by hospitals, health plans, larger physician groups, and FQHCs to smaller EHRs more common among independent practices, community health centers, and other providers.

Our network spans across every county in California, including with local health departments and county agencies:



As the largest nonprofit qualified health information organization (QHIO) under the CalHHS Data Exchange Framework (DxF) and a member of national networks like eHealth Exchange, Manifest MedEx also delivers health information from outside the MX Network, including from some of California’s largest health systems, like Kaiser Permanente and CommonSpirit.

Join Manifest MedEx to get access to the tools and health data needed to succeed under CalAIM at www.manifestmedex.org/join-us/.