

Save Time and Improve Your Quality Scores with Manifest MedEx's Data Aggregator Validation Services

Access accurate, standard supplemental data for HEDIS® reporting

Manifest MedEx (MX) is one of the first health information organizations in the country to earn NCQA's Validated Data Stream designation. This designation confirms that validated data provided by Manifest MedEx can be used as standard supplemental data in HEDIS reporting, instead of needing to obtain and validate the clinical data from individual providers. MX has earned this designation since 2021.

Through our NCQA validated data services, health plans:



Save time – Validated data provided by MX is treated as standard supplemental data. No primary source verification (PSV) is required by the plan, saving time spent assembling member records and confirming accurate data. This service also reduces the burden for providers, who only need to share and validate data once, rather than responding to “chart chases” and requests from health plans every year.



Ensure data accuracy – Since MX is performing PSV as part of the NCQA Data Aggregator Validation process, health plans can be confident that the data provided to the plan matches the data in the provider's EHR.



Simplify audit process – Validated data provided by MX does not require section 5a of the HEDIS audit to be completed and reviewed with auditors.

MX Enhanced NCQA Data Aggregator Validation Service

As a premium service, Manifest MedEx also offers health plans “uplifted,” that is, enhanced or improved, NCQA validated data to be used as standard supplemental data for HEDIS reporting. The most common and significant challenge in using provider-sourced clinical data for HEDIS reporting is the use of non-standard codes, local codes, or non-codes by provider organizations. Improperly coded data often errors out of HEDIS engines, leading to underreporting and potentially negatively impacting health plan quality ratings, quality improvement initiatives, and reimbursement.

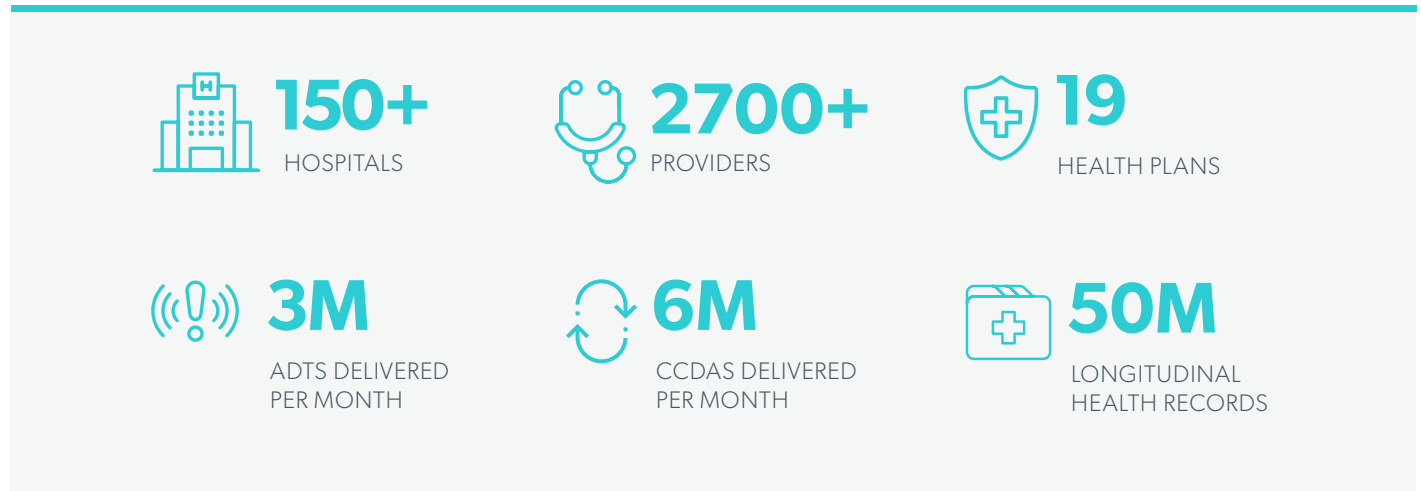
Manifest MedEx improves the quality of member data by identifying non-standard codes and mapping them to standard codes across all key data domains used in HEDIS measure calculations, specifically immunizations, labs, problems, procedures, and vitals. The enhanced data is NCQA-validated and provided to health plans in the same format as non-enhanced validated data, minimizing the impact and effort required by health plans to leverage this improved data set.

Data Domain	Coding Systems
Immunizations	CVX, NDC
Labs	LOINC
Problems	SNOMED CT, ICD-10CM
Procedures	CPT, HCPCS
Vitals	LOINC

About the Manifest MedEx Network

Manifest MedEx actively monitors, delivers and integrates patient data in or near real-time across a diverse network of data contributors — seamlessly connecting and exchanging data with more than 70 EHRs across California, from the largest vendors used by hospitals, health plans, larger physician groups, and FQHCs to smaller EHRs more common among independent practices and community health centers — to provide healthcare organizations with the information they need to improve care, enhance health, and lower costs.

Our network spans across every county in California, including with local health departments and county agencies:



As the largest nonprofit qualified health information organization (QHIO) under the CalHHS Data Exchange Framework (DxF) and a member of national networks like eHealth Exchange, Manifest MedEx also delivers health information from outside the MX Network, including from some of California’s largest health systems, like Kaiser Permanente and CommonSpirit.

Visit us at manifestmedex.org or contact us at info@manifestedex.org to learn more about our NCQA Data Aggregator Validation services.